

V14

Oracle E-Business Suite Enterprise Command Centers (ECC) Quick Start Guide

Announcement

Quick Links

Installation

Documentation

Oracle is pleased to announce the availability of new and enhanced Enterprise Command Centers to help Oracle E-Business Suite users identify and act on priority transactions without custom operational reporting. The release includes 36 command centers comprising 160+ dashboards across Oracle E-Business Suite.

Watch EBS leaders announcing ECC V14 and giving an overview of what's new in this release



Cliff Godwin - Senior Vice President of Applications Development

[Oracle E-Business Suite Enterprise Command Centers – April 2025 Update](#)



Muhannad Obeidat - Vice President of Software Development

[Enterprise Command Centers Empower EBS User Experience – Data Discovery Visualization](#)



[Announcing Oracle E-Business Suite Enterprise Command Centers – April 2025 Update](#)

Full set of documentation needed in your ECC journey



Oracle E-Business Suite Releases 12.1 and 12.2 Release Content Documents Doc: [1302189.1](#)

Installing Oracle Enterprise Command Center Framework Doc: [2495053.1](#)

Oracle Enterprise Command Center Framework Globalization Guide Doc: [3059037.1](#)

Enabling TLS for Oracle Enterprise Command Center Framework Doc: [2496445.1](#)

Oracle Enterprise Command Center Framework High Availability Doc: [2745581.1](#)

Oracle Enterprise Command Center - RBAC Alternative Approach Doc: [2825838.1](#)

[Oracle E-Business Suite: Extending Enterprise Command Centers](#)

[Oracle E-Business Suite User's Guide: Enterprise Command Centers](#)

[Oracle E-Business Suite: Administering Enterprise Command Centers](#)

V14

Oracle E-Business Suite Enterprise Command Centers (ECC) Quick Start Guide

Announcement



Tutorial videos direct from development and transfer of information sessions

[Enterprise Command Centers: Direct from Development videos](#)

Quick Links

[Enterprise Command Centers for E-Business Suite: Technical Details and Implementation](#)

Installation

[Realizing the Value of ECC for Oracle E-Business Suite Financials](#)

Documentation

[Implement and Use - Install ECC Online Training](#)

[Implement and Use - UI Components Online Training](#)

Hands-On Labs covers the latest version of ECC



[From Installation to Personalizations](#)

[From Personalization to Extensibility](#)

ECC image in the OCI Marketplace



[ECC V13 OCI Marketplace Image \(V14 coming soon\)](#)

Proactively identify missing patches, and more using ECC analyzer



EBS Enterprise Command Center (ECC) Analyzer Doc: [2587090.1](#)

ECC community provide access to experts that empower collaboration



[Enterprise Command Center Framework Support Community - EBS \(MOSC\)](#)



[Enterprise Command Center Framework - EBS Ideas](#)

V14

Oracle E-Business Suite Enterprise Command Centers (ECC) Quick Start Guide

All patches required for installing V14 release



Enterprise Command Center

Prerequisites

[R12.AD.C.Delta.15](#)

[R12.TXK.C.Delta.15](#)

ECC Framework

[36962225](#)

ECC Adapter

[36962214](#)

ATG



12.2.7

[36962188](#)

12.2.8

[36962189](#)

12.2.9

[36962190](#)

12.2.10

[36962191](#)

12.2.11

[36962192](#)



12.2.12

[36962856](#)

12.2.13

[36962205](#)

12.2.14

[36962204](#)



Product Families Consolidated Patches

Financials | [36962130](#)

General Ledger, Receivables, iReceivables, Assets, Payables, Cash Management, iExpenses, Lease, and Finance Management

Projects | [36962148](#)

Projects



Supply Chain Management | [36962151](#)

Order Management, Inventory Management, Enterprise Asset Management, Channel Revenue Management, Discrete Manufacturing, Process Manufacturing, Outsourced Manufacturing, Cost Management, Depot Repair, Advanced Pricing, Project Manufacturing

Procurement | [36962150](#)

iProcurement, Contract Life cycle Management, Procurement, iStore



Customer Relationship Management | [36962149](#)

Service Contracts, Service, Incentive Compensation

Human Resource Management | [36962147](#)

Human Resources, Payroll

Announcement

Quick Links

Installation

Documentation

V14

Oracle E-Business Suite Enterprise Command Centers (ECC) Quick Start Guide

Announcement

Quick Links

Installation

Documentation

All product documentation and transfer of information (TOI) sessions for V14

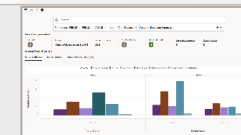


Implement and use online training sessions cover the new and enhanced features in this release. To check the previous release sessions, visit [Oracle E-Business Suite Transfer of Information \(TOI\) Training](#) and search by command center name.



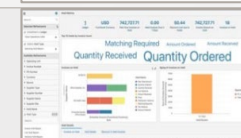
Oracle General Ledger Command Center

[Implement and Use Online Training](#) | [Implementation Guide](#) | [User Guide](#)



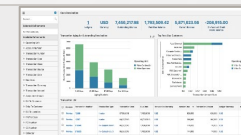
Oracle Payables Command Center

[Implement and Use Online Training](#) | [Implementation Guide](#) | [User Guide](#)



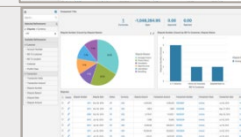
Oracle Receivables Command Center

[Implement and Use Online Training](#) | [Implementation Guide](#) | [User Guide](#)



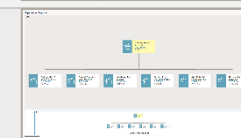
Oracle iReceivables Command Center

[Implement and Use Online Training](#) | [Implementation Guide](#) | [User Guide](#)



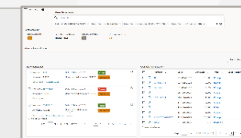
Oracle Employee Expenses Command Center

[Implement and Use Online Training](#) | [Implementation Guide](#) | [User Guide](#)



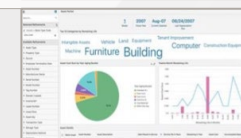
Oracle Cash Management Command Center

[Implement and Use Online Training](#) | [Implementation Guide](#) | [User Guide](#)



Oracle Assets Command Center

[Implement and Use Online Training](#) | [Implementation Guide](#) | [User Guide](#)



Oracle E-Business Suite Enterprise Command Centers (ECC)

Quick Start Guide

Announcement

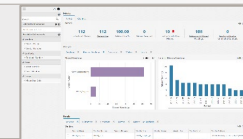
Quick Links

Installation

Documentation

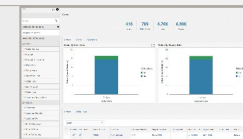
Oracle Lease and Finance Management Command Center

[Implement and Use Online Training](#) | [Implementation Guide](#) | [User Guide](#)



Oracle Order Management Command Center

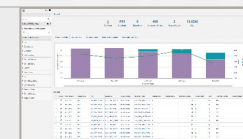
[Implement and Use Online Training](#) | [Implementation Guide](#) | [User Guide](#)



Oracle Inventory Management Command Center

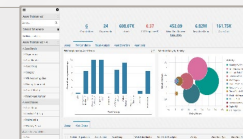
[Implement and Use Online Training – Move order | Supply / Demand | Electronic Kanban | Transaction Management | Period Balances Transaction Processing Exceptions | Movement Statistics and Exceptions | Replenishment](#)

[Implementation Guide](#) | [User Guide](#)



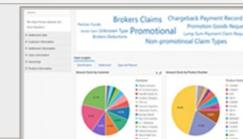
Oracle Enterprise Asset Management Command Center

[Implement and Use Online Training](#) | [Implementation Guide](#) | [User Guide](#)



Oracle Channel Revenue Management Command Center

[Implement and Use Online Training](#) | [Implementation Guide](#) | [User Guide](#)



Oracle Discrete Manufacturing Command Center

[Implement and Use Online Training](#) | [Implementation Guide](#) | [User Guide](#)



Oracle Process Manufacturing Command Center

[Implement and Use Online Training](#) | [Implementation Guide](#) | [User Guide](#)



Oracle E-Business Suite Enterprise Command Centers (ECC) Quick Start Guide

Announcement

Quick Links

Installation

Documentation



Oracle Bills of Materials Command Center

[Implement and Use Online Training](#) | [Implementation Guide](#) | [User Guide](#)



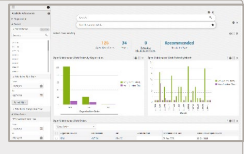
Oracle Outsourced Manufacturing Command Center

[Implement and Use Online Training](#) | [Implementation Guide](#) | [User Guide](#)



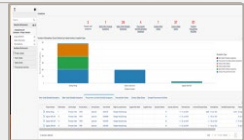
Oracle Cost Management Command Center

[Implement and Use Online Training](#) | [Implementation Guide](#) | [User Guide](#) | [Process Manufacturing User Guide](#)



Oracle Project Manufacturing Command Center

[Implement and Use Online Training](#) | [Implementation Guide](#) | [User Guide](#)



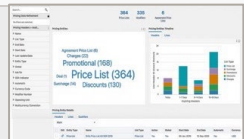
Oracle Quality Command Center

[Implement and Use Online Training](#) | [Implementation Guide](#) | [User Guide](#)



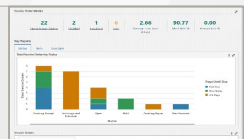
Oracle Advanced Pricing Command Center

[Implement and Use Online Training](#) | [Implementation Guide](#) | [User Guide](#)



Oracle Depot Repair Command Center

[Implement and Use Online Training](#) | [Implementation Guide](#) | [User Guide](#)



Oracle E-Business Suite Enterprise Command Centers (ECC) Quick Start Guide

Announcement

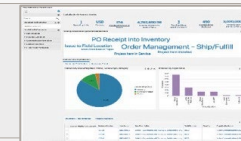
Quick Links

Installation

Documentation

Oracle Asset Tracking Command Center

[Implement and Use Online Training](#) | [Implementation Guide](#) | [User Guide](#)



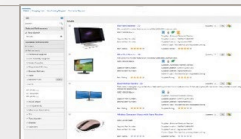
Oracle Landed Cost Management Command Center

[Implement and Use Online Training](#) | [Implementation Guide](#) | [User Guide](#)



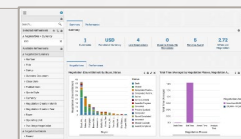
Oracle iProcurement: Consumer-Like Shopping

[Implement and Use Online Training](#) | [Implementation Guide](#) | [User Guide](#)



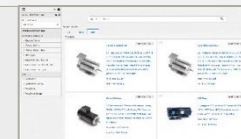
Oracle Procurement Command Center

[Implement and Use Online Training](#) | [Implementation Guide](#) | [User Guide](#)



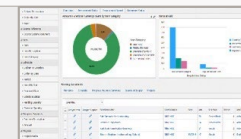
Oracle iStore: Enhanced Product Search

[Implement and Use Online Training](#) | [Implementation Guide](#) | [User Guide](#)



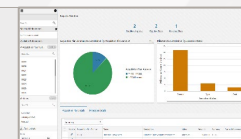
Oracle Project Procurement Command Center

[Implement and Use Online Training](#) | [Implementation Guide](#) | [User Guide](#)



Oracle Contract Lifecycle Management for Public Sector

[Implement and Use Online Training](#) | [Implementation Guide](#) | [iProcurement User Guide](#) | [Purchasing User Guide](#)



Announcement

Quick Links

Installation

Documentation



Oracle Projects Command Center

[Implement and Use Online Training – Investment Turn Dashboard](#) |

[Implement and Use Online Training – G Invoicing \(Federal\)](#) |

[Implement and Use Online Training – Billing Dashboard](#) |

[Implement and Use Online Training – Transfer Budgets and Year-End Budget](#) |

[Implement and Use Online Training – Project Costing](#) | [Implementation Guide](#) | [User Guide](#)



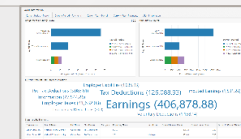
Oracle Human Resources Command Center

[Implement and Use Online Training](#) | [Implementation Guide](#) | [User Guide](#)



Oracle Payroll Command Center

[Implement and Use Online Training](#) | [Implementation Guide](#) | [User Guide](#)



Oracle Incentive Compensation Command Center

[Implement and Use Online Training](#) | [Implementation Guide](#) | [User Guide](#)



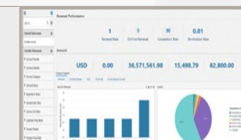
Oracle Lease Contracts Command Center

[Implement and Use Online Training](#) | [Implementation Guide](#) | [User Guide](#)



Oracle Service Command Center

[Implement and Use Online Training](#) | [Implementation Guide](#) | [User Guide](#)



V14

Oracle E-Business Suite Enterprise Command Centers (ECC) Quick Start Guide

Announcement

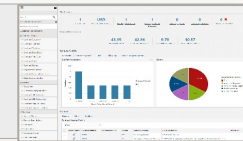
Quick Links

Installation

Documentation

Oracle Service Contracts Command Center

[Implement and Use Online Training](#) | [Implementation Guide](#) | [User Guide](#)



Oracle Field Service Command Center

[Implement and Use Online Training](#) | [Implementation Guide](#) | [User Guide](#)

