

FLESHLIGHT® LAUNCH™

powered by:



MANUAL

The Fleshlight Launch is intended to be used with original Fleshlight products **only**. The usage of any third party hardware product in combination with the Fleshlight Launch violates the terms of usage and warranty, and neither Fleshlight nor Kiiroo will be liable for any damage sustained.

Please, find the Visual Manual here:

https://www.dropbox.com/s/hn9oyujmao6rh03/00_FULL_1.mp4?dl=0

<https://www.youtube.com/watch?v=687md4dSAC0>

Table of Contents

1. Setup your device	2
2. Using your device	3
3. Download the FeelMe App	4
4. Services	5
5. Modes	6
5.1 Interactive Mode	6
5.2 Manual Mode	6
6. Charging and LED indicator	7
6.1 To charge your device	7
6.2 LED Indicator	7
7. Sleeve, Handling and Lube	8
8. Cleaning	9
9. Disclaimer and Warnings	10
10. Disposal Specifications	12
11. Aftercare and Help	13
Specifications:	13
Help:	13
Opening hours	13

I. Setup your device

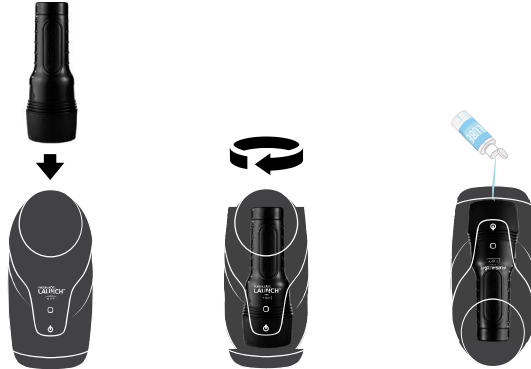
1. Charge your device until the green light turns solid; about 6-9 hours.
We recommend charging the device fully prior to the first use.
2. Go to www.kiiroo.com to create your user account.
3. Once you have created an account, please go to:
www.kiiroo.com/launchwarranty to register your device and activate your one (1) year warranty.
4. Download the FeelMe App to pair your device with your mobile phone (Go to page 4).

android

iphone

2. Using your device

1. Insert the Fleshlight into the Launch.

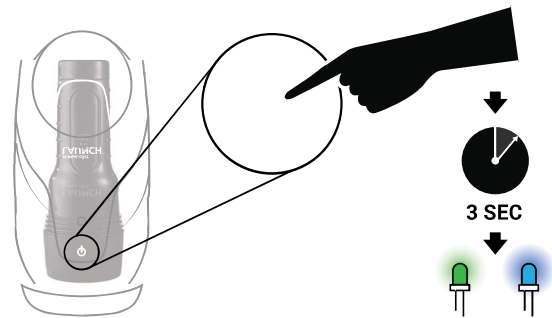


2. Turn device until it locks in place.

3. Turn device around and lube the Fleshlight and yourself.

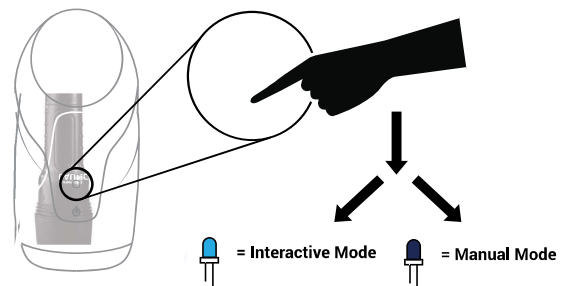
*The Fleshlight Launch is intended to be used with original Fleshlight products **only**. The usage of any third party hardware product in combination with the Fleshlight Launch violates the terms of usage and warranty, and neither Fleshlight nor Kiiroo will be liable for any damage sustained.

4. Push the “on button” (approximately 3 seconds) until the device comes on. The Launch is now in interactive mode (Go to page 6).



5. The flashing blue light indicates your device is in interactive mode and searching to connect.

6. Slightly touch the blue light with your thumb until blue light goes off; now you are in manual mode (Go to page 6).



7. To turn off the device: hold the “on button” for approximately 4 seconds.
-

3. Download the FeelMe App

Please download the FeelMe App and follow the instructions on how to pair your Launch to the app.

[android](#)

[iphone](#)

4. Services

Feel Your Lover

When paired online, the complementary devices give you the touch and intimacy you crave, from anywhere in the world.

Feel Videos

Our exclusive encoded porn videos will make you feel and see your favorite model making the moves that turn you on most.

Feel Virtual Reality

Use the devices in combination with all main VR glasses and Virtual Reality Porn. Experience high quality adult videos filmed in 180-degrees, with 3D stereoscopic views from head to toe.

Feel Webcam Models

Our cam partners have a special interactive section on their website with hot models ready to control your device. Every move cam models make can be felt in the device.



Go to [FeelMe.com](https://www.feelme.com) to find a variety of interactive content.

5. Modes

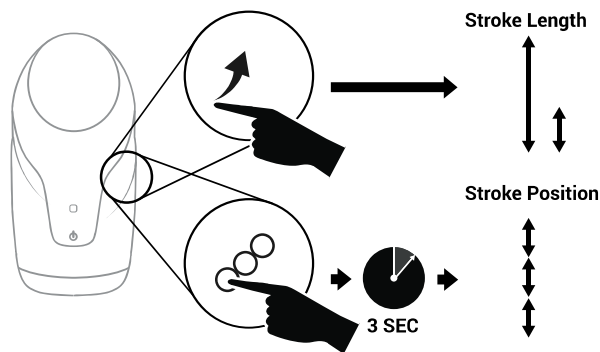
5.1 Interactive Mode

1. To pair the Launch with content, follow the instructions on the FeelMe App.
2. Go to [FeelMe.com](https://www.feelme.com) and scan the QR code to connect to the content of your choice.

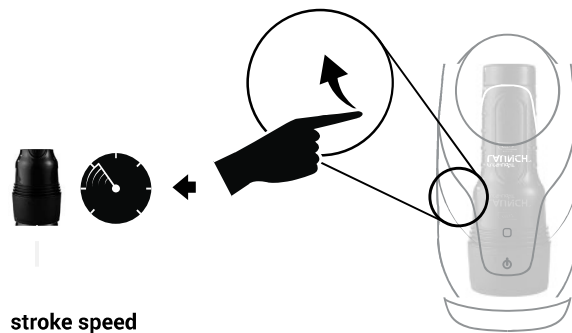
5.2 Manual Mode

Once the device is in manual mode:

1. Push the “on button” once and the Launch will automatically start stroking.
2. Swipe on the right side of the Launch to control the length of the stroke.
Swipe up to increase the length. Swipe down to decrease the length.



3. Swipe on the left side of the Launch to control the speed of the stroke.
Swipe up to increase the speed. Swipe down to decrease the speed.



4. In order to stop the Launch, click the “on button” once.

6. Charging and LED indicator

6.1 To charge your device:

1. On the backside of the device you will find the charging portal.
2. Remove the protection cap and insert the Micro USB charger into the charging port.
3. Once plugged into the power, a red light on the "on button" indicates that the device is charging.
4. The "on button" will turn green when the device is fully charged (Approximately 6-9 hours).
5. When the battery is low, the LED indicator will prompt you to charge by turning the "on button" a solid red.

**The device is only to be used with the USB cable provided in the device box.

6.2 LED Indicator

On button:

- | | |
|----------------|-------------------------------|
| (Green) | The device is fully charged |
| (Red) | The battery is low |
| (Blinking red) | The battery is critically low |

Bluetooth button:

- | | |
|-----------------------|---|
| (Sudden red light) | This indicates that there is a technical fault. Try to restart the device and re-insert the Flashlight. Contact customer service if this problem persists |
| (Blinking blue light) | Bluetooth-enabled and in interactive mode searching for device. |
| (Solid blue light) | Connected to device |
-

7. Sleeve, Handling and Lube

Fleshlight™ and Kiiroo recommend that you use [Fleshlube™](#) or any other kind of water-based lubricant with your Launch.

Do not use:

- Silicone lubricant as it could deteriorate the [sleeve](#) material.
- Massage oil or hand cream as lubricants.

8. Cleaning

Always clean your Fleshlight™ sleeve thoroughly after each use.

1. Remove the Fleshlight™ from the Launch.
2. Remove the sleeve from the outer casing.
3. Rinse the sleeve with warm water and **Fleshwash™** and allow to air dry.
4. Rinse the outer casing or wipe down with antibacterial wipes.
5. Dry completely before placing the sleeve back in the casing.
6. After your Fleshlight sleeve has been air dried, then use the **Fleshlight Renewing Powder** over your sleeve so that it remains smooth and soft.

[watch the video here](#)

9. Disclaimer and Warnings

- Fleshlight™ and Kiiroo make no medical claims with our devices.
 - **This device is not for use by persons under the age of 18.**
 - This device is not intended for use by anyone who is unable or unwilling to consent.
 - This device is not intended for persons with reduced physical, sensory or mental capabilities, or a lack of experience and knowledge, unless they have supervision or instruction concerning use of the device by a person responsible for their safety,
 - Fleshlight™ and Kiiroo will not be held responsible for any undesirable results of misuse.
 - Follow all directions as set forth by the manual and do not attempt to make any technical adjustments to your Launch at home.
-

- Do not use the Launch if there are exposed electronic elements.
 - Do not use the Launch if you are in a shower, bathtub, swimming pool, sauna steam room etc. **The Launch is NOT waterproof.
 - Do not use the Launch if it is excessively hot to touch.
 - Do not use the Launch and Fleshlight device on inflamed or irritated areas.
 - Avoid leaving your Launch in direct sunlight and NEVER expose it to extreme heat.
 - Never use cleansers containing alcohol, petrol or acetone.
 - Do not use heating appliances to dry the sleeve or device.
 - Avoid using harsh soaps as they can damage the sleeve material.
 - Always store the device out of reach of children.
-

The Fleshlight Launch is intended to be used with original Fleshlight products **only**.
The usage of any third party hardware product in combination with the Fleshlight Launch violates the terms of usage and warranty, and neither Fleshlight nor Kiiroo will be liable for any damage sustained.

10. Disposal Specifications

While the Launch is made from eco-friendly materials, you should not dispose of the Launch in your waste bin. Like any other electronic device with a rechargeable battery, there are disposal regulations. These regulations vary by local municipality, city and by country. Be aware of how electronics are disposed of where you live. Fleshlight™ and Kiiroo suggest you ask your local council center.

II. Aftercare and Help

Specifications:

Materials:	PC ABS, PU Coating; non-porous, chroming, silicone.
Finish:	Matte, Chrome
Size:	320 x 157 x 167 mm
Weight:	± 1500 g without Fleshlight ± 2000 g with Fleshlight
Charging time:	6-9 hours
User time:	2 hours

Help:

If you have any further problems with setup and installation or issues with using your device, please do not hesitate to contact our Customer Service team. Our team is there for your support and to explain solutions to your problems in detail. We try to make your online experience run as smoothly as possible. We aim to answer all questions within 48 hours of receiving them.

For frequently asked questions visit:

www.eshlight.eu/pages/faq us.eshlight.com/pages/faq www.kiiroo.com/faq

Fleshlight™

Monday - Friday 9am - 5pm CST

International orders: +1-512-865-5266

Customerservice@fleshlight.com

Kiiroo

Monday - Friday 9am - 5pm CET

+31207371194

info@kiiroo.com
